



2021

**NEW SOUTH WALES SECONDARY SCHOOLS
TEAMS RACING CHAMPIONSHIP**

Friday 30 April to Sunday 2 May 2021

SAILING INSTRUCTIONS

Host Club

Royal Sydney Yacht Squadron

Organising Authority

Royal Sydney Yacht Squadron

in conjunction with the

NSW Team Sailing Association



2021
NSW SECONDARY SCHOOLS
TEAMS RACING CHAMPIONSHIP

SAILING INSTRUCTIONS

Organising Authority: Royal Sydney Yacht Squadron in conjunction the NSW Team Sailing Association

1. Rules

- 1.1. The regatta will be governed by the rules as defined by the Racing Rules of Sailing (RRS), including Appendix D- Team Racing Rules.
- 1.2. Australian Sailing Special Regulations Part 2- Off the beach classes will apply.
- 1.3. All races will be umpired in accordance with Appendix D2.
- 1.4. From the time of her preparatory signal until she has finished, a boat which capsizes such that the masthead enters the water shall immediately retire from the race.
- 1.5. Pacer Class Rules will not apply.

2. Changes to Rules

- 2.1. To comply with RRS D2.2 a boat may protest another boat by clearly displaying a red flag on a side-stay, raised at least 50cm above the deck. A red flag at the bottom of the side-stay will be regarded as "inactive". Once a penalty has been taken or the umpires have made a decision the flag shall be returned to its inactive position.

3. Notices to Competitors

- 3.1. Notices to competitors will be posted on the Regatta Notice Board located in the Regatta Office Royal Sydney Yacht Squadron (RSYS).
- 3.2. Once a racing session has commenced Notices to Competitors may be posted on an information table near the changeover muster area or given verbally on the water in the method described in Instructions 4.1 and 4.2.

4. Changes to Sailing Instructions

- 4.1. Any change to these Sailing Instructions will be posted or notified in the changeover muster area and via VHF radio Ch 74 at least 15 minutes before the start of any race affected.
- 4.2. Oral instructions may be given on the water by the Race Committee and/or the Umpires, prior to the warning signal.

5. Signals Made Ashore

- 5.1. All signals made ashore will be displayed on the flag mast located outside the RSYS Sailing Office.
- 5.2. When displayed ashore flag "AP" means races not started are postponed. The first Warning Signal for the next race shall be made 20 minutes after the AP is lowered (amends race signal AP).

6. Schedule of Events

- 6.1. Table 1 shows the schedule of regatta events.
- 6.2. All teams are to register with the Race Office on the first morning of the regatta, and ensure all required forms are lodged and all payments are complete before they will be allowed to sail.
- 6.3. In the event that insufficient racing is conducted to reach a clear conclusion to the Championship a delayed finals day may be scheduled at the discretion of the Organising Authority.
- 6.4. No warning signal shall be made after 1600 on Sunday 2 May 2021.

Table 1 – Schedule of Events

Day / Date	Time	Event
Fri 30 th April 2021	0830 – 0930	Competitor registration and submission of forms.
	0930	Compulsory Competitor briefing for first round robin.
	1015	First Warning Signal of the racing session
	Post Racing	Umpire De-Brief
Sat 1 st May 2021	0830	Competitor briefing
	0900	First Warning Signal of the racing session
	Post Racing	Umpire De-Brief and NSWTSA Forum
Sun 2 nd May 2021	0830	Competitor briefing
	0900	First Warning Signal of the racing session
	1600	No Warning Signal of a Finals Race after 1600
	Post Racing	Umpire De-Brief and Presentation

7. Championship Format

- 7.1. The Championship will be sailed in three boat teams.
- 7.2. Following a breakdown, races may be completed in two boat versus two boat format until repairs are completed. Boats selected shall be at the discretion of the race Umpires.
- 7.3. It is the sole responsibility of each team to report to the Regatta Marshall at the changeover muster area and be available for changeover prior to their scheduled race. Teams not available at the time of changeover shall be scored a loss for that race without a hearing. This changes RRS 63.1.
- 7.4. The Championship will be sailed as a Qualifying Series using a computer-generated Swiss League (Swiss League) and Finals Series.
- 7.5. Qualifying Series:
 - 7.5.1. Scheduled from Friday 30th April to Sunday 2nd May 2021.
 - 7.5.2. All teams will participate in a Swiss League.
 - 7.5.3. As many rounds as possible of the Swiss League will be raced. Incomplete rounds will not be scored.
 - 7.5.4. Teams shall be ranked in the order determined by Swiss League. This changes RRS D4.
- 7.6. Final Series:
 - 7.6.1. Scheduled for Sunday 2nd May 2021.
 - 7.6.2. The top eight teams from the Qualifying Series will progress to the Championship finals series.
 - 7.6.3. It is intended to race a staged finals format. **Refer Attachment F.**

- 7.7. The Race Committee may change the format, terminate or eliminate any round or stage, when conditions or the remaining time scheduled do not permit the completion of the event format.
- 7.8. If insufficient racing is conducted to reach a clear conclusion to the Championship a delayed finals day may be scheduled.

8. Supplied Boats

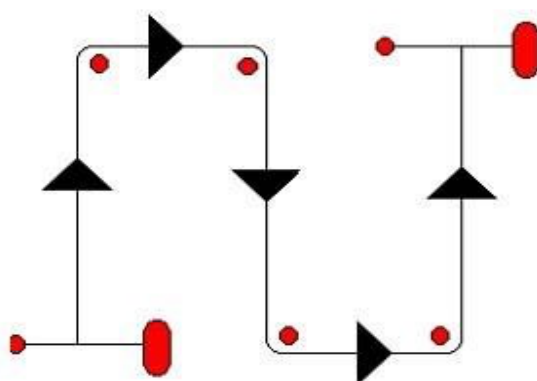
- 8.1. Pacer type dinghies will be supplied by the Organising Authority. See SI Attachment A.

9. Venue and Racing Area (Attachment B)

- 9.1. [Royal Sydney Yacht Squadron](#) (RSYS) is located at 33 Peel Street, Kirribilli, NSW, 2061.
- 9.2. Racing will take place on Sydney Harbour in the vicinity of Royal Sydney Yacht Squadron, Kurraba Point and Robertson Point.

10. The Course

The course to be sailed will be a starboard hand digital N course, consisting of a windward leg, a leeward leg and a windward finish leg. There will be short reaching legs between each of the windward/leeward legs.



11. Marks

- 11.1. Marks 1, 2, 3 and 4 will be yellow inflatable buoys.
- 11.2. The Start Mark will be a white with a black top inflatable buoy.
- 11.3. The Finish Mark will be a black and white chequered inflatable buoy.

12. The Start

- 12.1. The next race to start will be signalled, before or with the Warning Signal, on a board located on the stern of the Committee Boat.
- 12.2. The Starting line will be between an orange flag on the Committee Boat at the starboard end and the port end Start Mark.
- 12.3. Races will be started by using the below starting sequence. This changes RRS 26 and *Race Signals*.

Signal	Sound	Flag	Time before start
Warning	1 Short	Numeral Pennant 1 or 2 (in succession)	3 minutes
Preparatory	1 Short	Flag P	2 minutes
	1 Long	Flag P removed	1 minute
Start	1 Short	Numeral Pennant 1 or 2 removed	0

**** Odd numbered races will use Numeral Pennant 1 for their Warning signal and Even numbered races will use Numeral Pennant 2 for their Warning signal.**

- 12.4. Starts may be made sequentially.
- 12.5. A boat starting later than 2 minutes after her starting signal shall be scored Did Not Start. This changes Rules 63.1, A5.1 and A5.2.

13. Recalls

- 13.1. Recalls shall be signalled in accordance with RRS 29, except that flag X shall be displayed for no more than two minutes.
- 13.2. The Race Officer will attempt to call out the colour and bow number of any boats starting prematurely. Failure to hear the call shall not be grounds for redress.

14. Time Limit and Abandonment

- 14.1. If no boat has finished within 20 minutes of the start the race will be abandoned.
- 14.2. Boats not finishing within five minutes of the first boat that sails the course and finishes will be scored DNF without a hearing. This changes Rule 35, 63.1 A5.1 & A5.2.
- 14.3. Abandonment may be signalled orally by the Race Committee and/or the Umpires. Abandoned races may be resailed and if so, a new warning signal will be made as soon as practical. This changes Rule 32 and Race Signals.

15. The Finish

The finishing line will be between the pole displaying a blue flag on the Finish Boat at the starboard end and the port end finishing mark.

16. Protests and Requests for Redress

- 16.1. For protests and requests for redress other than protests under a rule listed in Rule D2.2, competitors shall inform an Umpire or the Race Committee prior to rotating boats or going ashore.
- 16.2. Rule D2.4 is amended such that a "Green or Green and White" flag will signal no penalty and a "Black or Black and White" flag will signal that an incident will be reported to the protest committee.
- 16.3. For hearings involving breakdowns, Rule D5 is changed to replace "Race Committee" with "Umpires".
- 16.4. Instructions 18 (Breakdowns) and 19 (Support Boats) are not competitor protestable.

17. Scoring

- 17.1. Appendices D3 [scoring a race] will apply to all races and the qualifying series will be scored per the Swiss League.
- 17.2. Placings shall be decided using the accumulated rankings at the end of the last completed full round. In the case of a Swiss League a round is completed when all teams have raced once.
- 17.3. Where a complete round of races cannot be completed no results will be awarded.
- 17.4. Ties shall be broken in accordance with the following (Swiss League tie-break):

Rule D4.4 is deleted and replaced with

"Ties will be broken, in order of precedence, in favour of the team(s) that has:

- 1. if the tie is between two teams only, won the last race between them.
- 2. sailed more races against teams that have a higher place.
- 3. sailed fewer races against teams that have a lower place.
- 4. the lowest sum of the places of the teams the tied teams have beaten.
- 5. the lowest sum of the places of the teams to which the tied teams have lost.

6. beaten the highest-placed team the tied teams have individually beaten.
7. not been beaten by the lowest-placed team to which the tied teams have individually lost.

Step 1 will be applied whenever a step leaves a tie between two teams.

Steps 2 to 7 will be repeated until no more ties can be broken when remaining ties will be broken by the draw for the first round; ties in odd-numbered rounds will use the draw, ties in even-numbered rounds will use the draw inverted.

18. Breakdowns

- 18.1. As per Appendix D5 except that in D5.2 “red flag” is replaced by “green flag”.
- 18.2. In the event of a breakdown races for that flight may continue as described in Instruction 7.2.

19. Support Boats

- 19.1. Team leaders, coaches and other support personnel are not permitted on the water.
- 19.2. Spectator craft shall stay 75 metres outside areas where boats are racing from the time of the preparatory signal until all boats have finished or retired or the Race Committee signals a postponement, general recall or abandonment. This will apply always except when asked to assist by the Race Committee.

20. Rubbish

No rubbish is to be dumped into the water. All rubbish is to be handed to official boats or taken ashore.

21. Communication

- 21.1. Team managers, coaches, team members and supporters shall not communicate in any way with competitors from the preparatory signal until all boats have finished or the Race Officer signals a postponement, general recall or abandonment.
- 21.2. Except in an emergency, a boat that is racing shall not make voice or data transmissions and shall not receive voice or data communication that is not available to all boats.

22. Prizes

- 22.1. The New South Wales Secondary Schools Teams Racing Championship perpetual trophy will be awarded to the first placed New South Wales Secondary School Team.
- 22.2. Prizes will be awarded to the members of the winning team.
- 22.3. Other prizes will be awarded at the discretion of the Organising Authority.

23. Liability Disclaimer

- 23.1. It's the competitor's decision to enter the Championship or to start and continue in any race.
- 23.2. Attention is drawn to the Notice of Race Clauses 16 and 17.

24. Rights to Use Name and Likeness

In participating, a competitor automatically grants to the Organising Authority and the Sponsors the right in perpetuity, to make, use and show, from time to time and at their discretion, any motion pictures, still pictures and live, taped or filmed television and other reproductions of him/her during the period of the competition in which the competitor participates, and in all material related to the said event without compensation.

**Attachment A to
2021 NSW Secondary Schools Teams Racing Championship
Sailing Instructions**

Boats and Boat Management

A. Boats Supplied By The Organizing Authority

- a. Boats will be supplied for all competitors, who shall not modify them or cause them to be modified in any way except that
 - (a) a compass may be tied or taped to the hull or spars;
 - (b) wind indicators, including yarn or thread, may be tied or taped anywhere on the boat;
 - (c) hulls, centreboards and rudders may be cleaned, but only with water;
 - (d) adhesive tape may be used anywhere above the water line; and
 - (e) all fittings or equipment designed to be adjusted may be adjusted, except as provided in section D below.
- b. All equipment supplied with the boat for sailing purposes shall be in the boat while afloat.
- c. The penalty for not complying with one of the above instructions is disqualification from all races sailed in which the instruction was broken.
- d. Competitors shall report any damage or loss of equipment, however slight, to the organizing authority's representative immediately after securing the boat ashore. The penalty for breaking this instruction, unless the protest committee is satisfied that the competitor made a determined effort to comply, is disqualification from the race most recently sailed.
- e. Class rules requiring competitors to be members of the class association do not apply.

B. General Rules for Boat Handling

- a. While all reasonable steps are taken to equalise boats, variations will not be grounds for redress (amends rule 62).
- b. Competitors shall inspect assigned boats before each race for possible breakdown and missing equipment. Discrepancies shall be reported to the Beach Manager.
- c. Competitors shall report any damage or loss of equipment however slight as soon as possible the Beach Manager.
- d. Competitors must comply with any request from the Beach Managers regarding the berthing or hauling out of boats.
- e. Teams sailing the first races of each day are responsible for rigging and launching of boats prior to racing. Those teams sailing the last race of the day are responsible for berthing and storage, cleaning and unrigging of boats at the conclusion of each day/s sailing.

C. Handover of boats

- a. Handover of boats between races shall be completed without delay.
- b. After finishing competitors shall sail directly to the changeover area, without interfering with any races in progress.
- c. Competitors must leave the boat in the same state of repair and cleanliness as when first boarded and as empty of water as is possible.

D. Prohibited Items & Actions

Except in an emergency or in order to prevent damage or injury, or when directed by a race official or umpire, the following are prohibited:

- Perforating sails
 - Cleaning or washing hulls, or foils with anything other than water
 - Adjusting or altering standing rigging, halyards and main sail batten tension
 - **Jibs will be all set at the same tension and taped off on the mast on all boats. They are to be unfurled when rigging and furled when derigging the boats at the end of the day. DO NOT undo the jibs and adjust the tension.**
 - **If there are any problems with rigging or derigging, please see an Official and request to have it fixed.**
 - Removing purchases on the mainsheet
 - Marking of the hull or equipment other than by removable adhesive tape
 - The use of equipment or fittings for the purpose other than that intended
 - Intentional damage/tampering with boats
- Any additions to or alterations of equipment supplied

E. Permitted Items & Actions

- a. All equipment provided with the boat shall be carried while afloat.
- b. It is permissible to take on board,
 - Sunscreen
 - Drinking Water
 - Bailing bucket & sponge
 - Yarn or thread
 - Easily removable adhesive tape
 - Line [elastic or otherwise of 3mm diameter or less] that may be used for making minor repairs and preventing further damage
 - Tell-tails may be attached to sails with sail tape and shall then not be removed.
 - Wind indicators [yarn, thread, audio-tape or similar material] may be tied or taped to the side stays and shall then not be removed.
- c. All fittings or equipment designated to be adjusted may be adjusted except those items listed in Item C.
- d. Any fitting may be taped with electrical tape or similar to prevent injury, but this shall not prevent the normal action or use of that fitting.

F. Mandatory Items and Actions

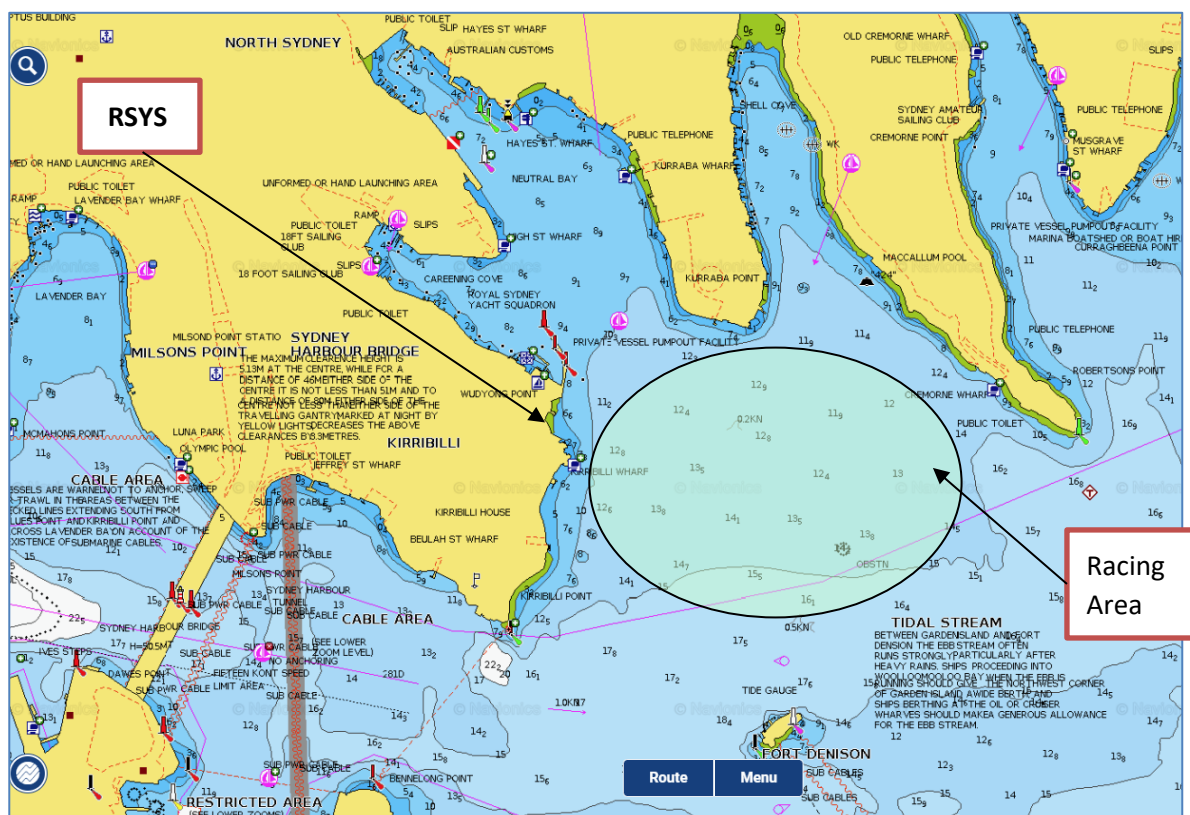
Competitors must supply their own bailing bucket of at least 1 litre capacity.

Attachment B to
2021 NSW Secondary Schools Teams Racing Championship
Sailing Instructions

Royal Sydney Yacht Squadron and Racing Area

Royal Sydney Yacht Squadron
33 Peel Street, Kirribilli, Sydney, NSW

rsys.com.au



Interface with Royal Sydney Yacht Squadron and Club Conditions

1. General

The host club, Royal Sydney Yacht Squadron is a member's club and as such clear parameters and guidelines will be prepared for the regatta to control the manner in which the Regatta Committee, Competitors, School Representatives, Parents and Spectators interact with the club. These guidelines will be shared with competing schools following registration. The guidelines will be adhered to by all entrants and their support staff.

2. On Site Amenity for Competitors and Support Staff

The Organising Authority will provide change rooms and amenities for use by the competitors and support staff. The Regatta Committee room will provide storage space for competitor bags whilst on water.

Competitors and their support staff will generally be accommodated on the lawn in front of the clubhouse and overlooking the race area.

Competitors and their support staff will have access to food and beverage facilities provided by the club. Access to such facilities will be in accordance with Club policy.

3. On Water Access for Coaches and Support Staff

Team leaders, coaches and other support personnel are not permitted on the water.

Coaches and support staff will co-ordinate access to Marshalling area and changeover areas and any other vessels in accordance with the parameters and guidelines established by the club. All school support staff will require to be registered prior to the regatta.

4. Parents and Spectators

Competitors and their support staff will have access to food and beverage facilities provided by the club. Access to such facilities will be in accordance with Club policy.

Parents and Spectators seeking on water access to the club will do so only within the parameters and guidelines established by the club.

**Attachment D to
2021 NSW Secondary Schools Teams Racing Championship
Sailing Instructions**

Royal Sydney Yacht Squadron Emergency Procedures



EMERGENCY PROCEDURES

Appendix 1

EMERGENCY PROCEDURES

Medical Emergencies

1. Remain calm
2. Assess the injury
 - a. If the injury is serious (e.g. injury to head, loss of blood, black out or broken bones, nausea, etc) dial '000' for emergency services then call staff with first aid qualification.
 - b. If minor injury call staff Member with first aid qualification (see list of qualified first aider qualified staff).
3. Contact the House Duty Manager (extension 199 or 90170199) to advise that there is a medical emergency and that an Ambulance has been called.
 - a. The Duty Manager will send a staff Member the street to direct the Ambulance to the hardstand.
 - b. The Duty Manager will phone the RSYs Chief Executive Officer or if unavailable the General Manager Operations to inform that a medical emergency has occurred.
4. Commence first aid whilst awaiting Ambulance and constantly monitor the casualty.
5. Following the emergency ensure that incident report forms are completed and given to the duty manager.

Emergencies on the Water

1. The Squadron does not have sufficiently trained staff or facilities to respond to many on-water emergencies. These emergencies include:
 - a. sinking yacht.
 - b. yacht on fire.
 - c. man overboard.
 - d. yacht capsize.
 - e. yacht adrift from mooring.
2. The Dock Master or RSYs staff may play a role in resolving these emergencies by assisting emergency services staff as directed.
3. In the case of an emergency staff should provide as much assistance as possible as long as it is safe to do so.
4. Staff should not perform any task that they are not trained to perform or comfortable with their ability to perform.

Fire Fighting Emergencies

1. Rescue any person in immediate danger but only if it is safe for you to do so.
2. Close any doors to enclose the fire or shut off the supply of fuel if the fuel bowser or pipes, etc., are on fire.
 - a. The fuel pump shut off is located between the fuel pump and the Sanivac at ground level.
 - b. The fuel flow shut off valves for the fuel supply lines that run under the hardstand are located at the back of the hardstand on the wall as shown in the attached photo.
3. Ring the fire brigade on '000' (see attached sheet on emergency calls).
4. Ring the House Duty Manager (extension 199 or 90170199) to advise that there is
 - a. a medical emergency and that an Ambulance has been called.
 - b. The Duty Manager will send a staff Member the street to direct the Ambulance to the hardstand.
 - c. The Duty Manager will phone the RSYs Chief Executive Officer or if unavailable the General Manager Operations to inform that a medical emergency has occurred.
5. Fight the fire if it is safe to do so. There are a number of firefighting tools on the hardstand including;
 - a. Hand held extinguishers for different fire types (see attached information).



- b. Water fire hoses
 - c. Foam firefighting attachment for use with fire hoses for on-water fuel/oil based fires.
6. Following the emergency ensure that incident report forms are completed and given to the duty manager.

Appendix 2

EMERGENCY CONTACT PROCEDURES

Emergency Contacts

Emergency Service '000' or call on VHF Channel 16.

Water Police '000' for emergencies.

Water Police (less urgent issues) 93207499 Water Police Balmain base.

Oil and Fuel Spill Emergencies 9296 4000 Sydney Ports Authority Emergency Response 24 hours.

NSW Maritime Authority 13 12 56.

North Sydney Police Station 9956 3199.

RSYS Waterfront Manager Ned Brown 9017 0161/0411 586 314

RSYS Chief Executive Officer William Pettigrew 0406 993 107.

RSYS Duty Manager / Security 9955 7171

RSYS Sailing Academy Manager 0418 923 232

Who to contact for advice out of business hours

If you need advice outside on what to do in a certain situation out of business hours the following Management Personnel should be contacted in the following order:

- 1) Angus Stranack 0418 923 232
- 2) William Pettigrew Chief Executive Officer 0406 993 107

Who to contact in the case of an emergency

If an emergency occurs involving damage to property, injury to individuals, fire or fuel/oil spill, etc. the following personnel should be called until contact is achieved.

William Pettigrew	Chief Executive Officer	0406 993 107
Angus Stranack	Sailing Academy Manager	0418 923 232

The above management personnel will then notify the Commodore.

Appendix 3

LOCATION OF FIRST AID EQUIPMENT

First Aid Kits

- House Manager Office, Main Clubhouse Level 4
- Sailing Office, Wudjong House
- Main Kitchen, outside dry goods store, Main Club House Level 4
- Careening Cove Anchorage, bar area stereo end in cupboard
- Workshop, hardstand Waterfront
- Dockmaster Office, hardstand Waterfront
- Committee Boat Gitana
- Committee Boat Mischief
- Youth Sailing Equipment Room, beneath Wudjong House

Advance Air Resuscitation and Defibrillation Equipment

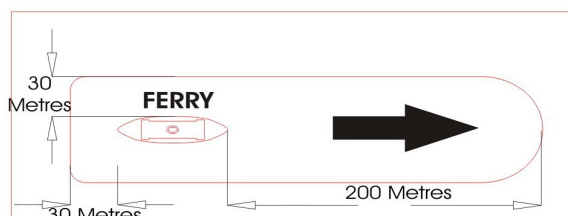
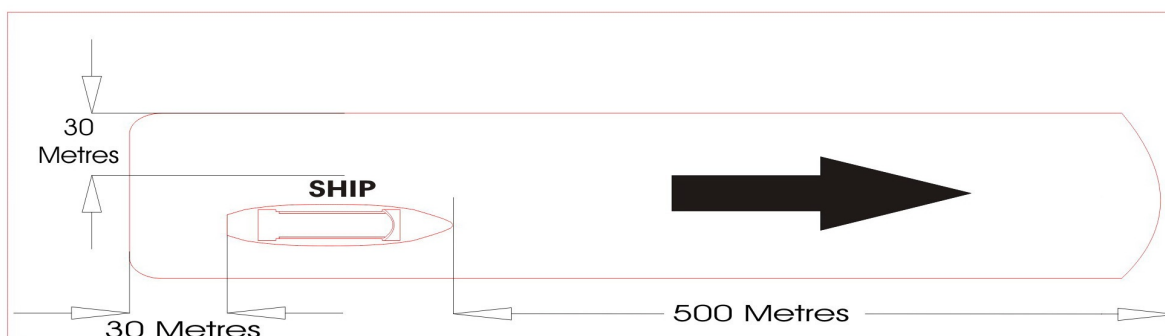
- House Manager Office, Main Clubhouse Level 4
- Dockmaster Office, Waterfront
- Committee Boats Gitana & Mischief

Ship and Ferry Activated Exclusion Zones

Notice to Competitors

All competitors must maintain a minimum distance of 500m from the bow of any ship(1) and 200m from the bow of any ferry(2) and no less than 30m from the sides/stern of any ship or ferry underway. These exclusion zones are designated as an obstruction.

- 1 Oil tankers & Seagoing cruise ships.
- 2 Other seagoing commercial vessel or ferry operating in accordance with an approved timetable.

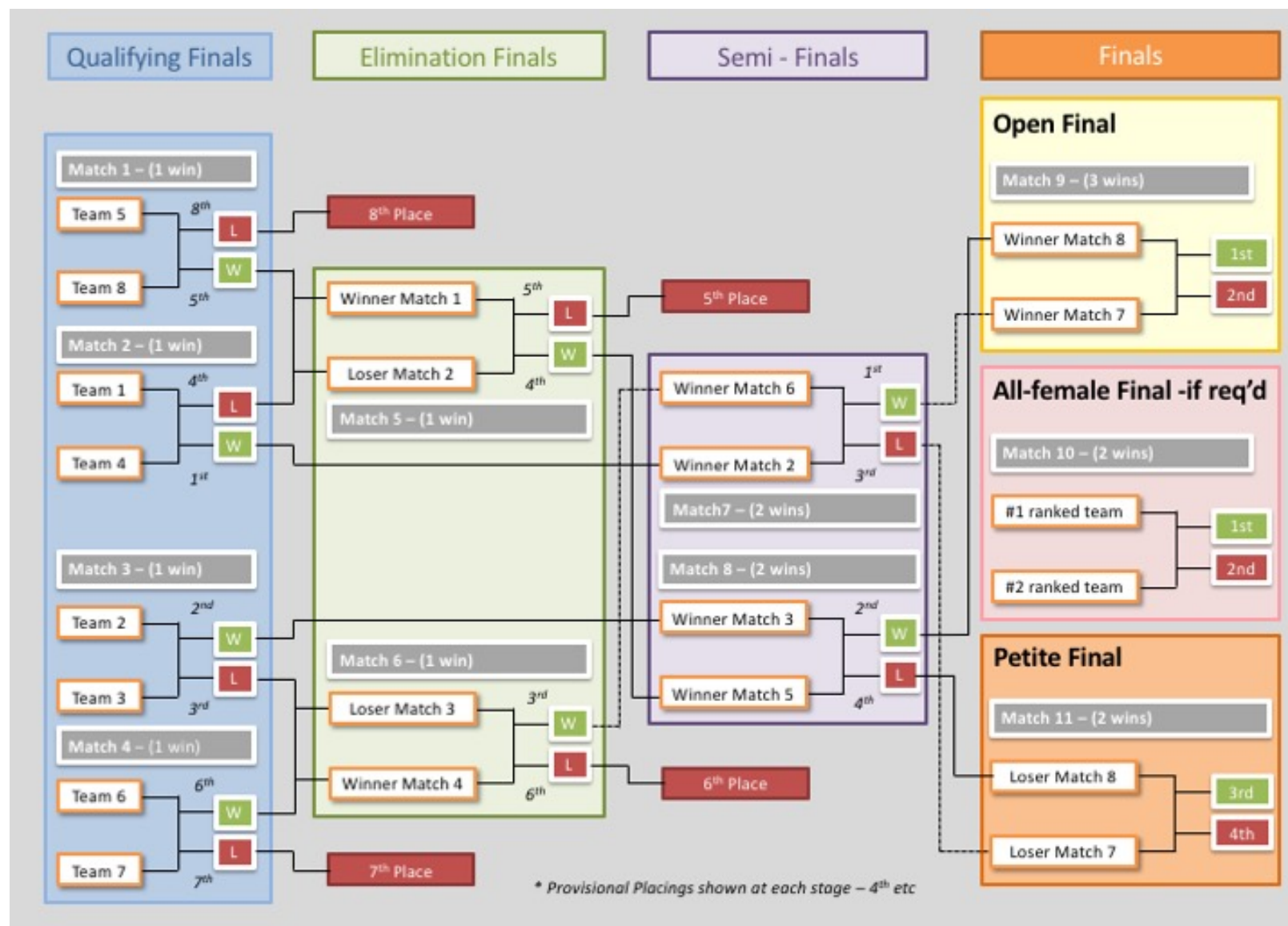


**SHIP & FERRY ACTIVATED
EXCLUSION ZONE**

8 Team Finals Format

FINALS FORMAT – 8 Qualifying teams – Knock Out Format

Note: All-female Final shown if required – see Sailing Instructions.



Scoring

- Winner of Matches 1-6 will be 1st team to score 1 race win.
- Winner of matches 7, 8, 10 and 11 will be 1st team to score 2 race wins.
- Winner of Match 9 will be 1st team to score 3 race wins.

Contingencies

- In the event Final series is not completed, respective provisional placings shown in table will prevail, subject to SI's and RRS App D.
- Should the OA determine it is not possible to complete all the matches in the Final Series, early stages may be deleted or amended in favour of later stages
- The order in which matches are raced may be amended to suit prevailing conditions and boat allocation.



2021

**NEW SOUTH WALES SECONDARY SCHOOLS
TEAMS RACING CHAMPIONSHIP**

Friday 30 April to Sunday 2 May 2021

SAILING INSTRUCTIONS

Host Club

Royal Sydney Yacht Squadron

Organising Authority

Royal Sydney Yacht Squadron

in conjunction with the

NSW Team Sailing Association



2021
NSW SECONDARY SCHOOLS
TEAMS RACING CHAMPIONSHIP

SAILING INSTRUCTIONS

Organising Authority: Royal Sydney Yacht Squadron in conjunction the NSW Team Sailing Association

1. Rules

- 1.1. The regatta will be governed by the rules as defined by the Racing Rules of Sailing (RRS), including Appendix D- Team Racing Rules.
- 1.2. Australian Sailing Special Regulations Part 2- Off the beach classes will apply.
- 1.3. All races will be umpired in accordance with Appendix D2.
- 1.4. From the time of her preparatory signal until she has finished, a boat which capsizes such that the masthead enters the water shall immediately retire from the race.
- 1.5. Pacer Class Rules will not apply.

2. Changes to Rules

- 2.1. To comply with RRS D2.2 a boat may protest another boat by clearly displaying a red flag on a side-stay, raised at least 50cm above the deck. A red flag at the bottom of the side-stay will be regarded as "inactive". Once a penalty has been taken or the umpires have made a decision the flag shall be returned to its inactive position.

3. Notices to Competitors

- 3.1. Notices to competitors will be posted on the Regatta Notice Board located in the Regatta Office Royal Sydney Yacht Squadron (RSYS).
- 3.2. Once a racing session has commenced Notices to Competitors may be posted on an information table near the changeover muster area or given verbally on the water in the method described in Instructions 4.1 and 4.2.

4. Changes to Sailing Instructions

- 4.1. Any change to these Sailing Instructions will be posted or notified in the changeover muster area and via VHF radio Ch 74 at least 15 minutes before the start of any race affected.
- 4.2. Oral instructions may be given on the water by the Race Committee and/or the Umpires, prior to the warning signal.

5. Signals Made Ashore

- 5.1. All signals made ashore will be displayed on the flag mast located outside the RSYS Sailing Office.
- 5.2. When displayed ashore flag "AP" means races not started are postponed. The first Warning Signal for the next race shall be made 20 minutes after the AP is lowered (amends race signal AP).

6. Schedule of Events

- 6.1. Table 1 shows the schedule of regatta events.
- 6.2. All teams are to register with the Race Office on the first morning of the regatta, and ensure all required forms are lodged and all payments are complete before they will be allowed to sail.
- 6.3. In the event that insufficient racing is conducted to reach a clear conclusion to the Championship a delayed finals day may be scheduled at the discretion of the Organising Authority.
- 6.4. No warning signal shall be made after 1600 on Sunday 2 May 2021.

**** Odd numbered races will use Numeral Pennant 1 for their Warning signal and Even numbered races will use Numeral Pennant 2 for their Warning signal.**

- 12.4. Starts may be made sequentially.
- 12.5. A boat starting later than 2 minutes after her starting signal shall be scored Did Not Start. This changes Rules 63.1, A5.1 and A5.2.

13. Recalls

- 13.1. Recalls shall be signalled in accordance with RRS 29, except that flag X shall be displayed for no more than two minutes.
- 13.2. The Race Officer will attempt to call out the colour and bow number of any boats starting prematurely. Failure to hear the call shall not be grounds for redress.

14. Time Limit and Abandonment

- 14.1. If no boat has finished within 20 minutes of the start the race will be abandoned.
- 14.2. Boats not finishing within five minutes of the first boat that sails the course and finishes will be scored DNF without a hearing. This changes Rule 35, 63.1 A5.1 & A5.2.
- 14.3. Abandonment may be signalled orally by the Race Committee and/or the Umpires. Abandoned races may be resailed and if so, a new warning signal will be made as soon as practical. This changes Rule 32 and Race Signals.

15. The Finish

The finishing line will be between the pole displaying a blue flag on the Finish Boat at the starboard end and the port end finishing mark.

16. Protests and Requests for Redress

- 16.1. For protests and requests for redress other than protests under a rule listed in Rule D2.2, competitors shall inform an Umpire or the Race Committee prior to rotating boats or going ashore.
- 16.2. Rule D2.4 is amended such that a "Green or Green and White" flag will signal no penalty and a "Black or Black and White" flag will signal that an incident will be reported to the protest committee.
- 16.3. For hearings involving breakdowns, Rule D5 is changed to replace "Race Committee" with "Umpires".
- 16.4. Instructions 18 (Breakdowns) and 19 (Support Boats) are not competitor protestable.

17. Scoring

- 17.1. Appendices D3 [scoring a race] will apply to all races and the qualifying series will be scored per the Swiss League.
- 17.2. Placings shall be decided using the accumulated rankings at the end of the last completed full round. In the case of a Swiss League a round is completed when all teams have raced once.
- 17.3. Where a complete round of races cannot be completed no results will be awarded.
- 17.4. Ties shall be broken in accordance with the following (Swiss League tie-break):

Rule D4.4 is deleted and replaced with

"Ties will be broken, in order of precedence, in favour of the team(s) that has:

- 1. if the tie is between two teams only, won the last race between them.
- 2. sailed more races against teams that have a higher place.
- 3. sailed fewer races against teams that have a lower place.
- 4. the lowest sum of the places of the teams the tied teams have beaten.
- 5. the lowest sum of the places of the teams to which the tied teams have lost.

6. beaten the highest-placed team the tied teams have individually beaten.
7. not been beaten by the lowest-placed team to which the tied teams have individually lost.

Step 1 will be applied whenever a step leaves a tie between two teams.

Steps 2 to 7 will be repeated until no more ties can be broken when remaining ties will be broken by the draw for the first round; ties in odd-numbered rounds will use the draw, ties in even-numbered rounds will use the draw inverted.

18. Breakdowns

- 18.1. As per Appendix D5 except that in D5.2 “red flag” is replaced by “green flag”.
- 18.2. In the event of a breakdown races for that flight may continue as described in Instruction 7.2.

19. Support Boats

- 19.1. Team leaders, coaches and other support personnel are not permitted on the water.
- 19.2. Spectator craft shall stay 75 metres outside areas where boats are racing from the time of the preparatory signal until all boats have finished or retired or the Race Committee signals a postponement, general recall or abandonment. This will apply always except when asked to assist by the Race Committee.

20. Rubbish

No rubbish is to be dumped into the water. All rubbish is to be handed to official boats or taken ashore.

21. Communication

- 21.1. Team managers, coaches, team members and supporters shall not communicate in any way with competitors from the preparatory signal until all boats have finished or the Race Officer signals a postponement, general recall or abandonment.
- 21.2. Except in an emergency, a boat that is racing shall not make voice or data transmissions and shall not receive voice or data communication that is not available to all boats.

22. Prizes

- 22.1. The New South Wales Secondary Schools Teams Racing Championship perpetual trophy will be awarded to the first placed New South Wales Secondary School Team.
- 22.2. Prizes will be awarded to the members of the winning team.
- 22.3. Other prizes will be awarded at the discretion of the Organising Authority.

23. Liability Disclaimer

- 23.1. It's the competitor's decision to enter the Championship or to start and continue in any race.
- 23.2. Attention is drawn to the Notice of Race Clauses 16 and 17.

24. Rights to Use Name and Likeness

In participating, a competitor automatically grants to the Organising Authority and the Sponsors the right in perpetuity, to make, use and show, from time to time and at their discretion, any motion pictures, still pictures and live, taped or filmed television and other reproductions of him/her during the period of the competition in which the competitor participates, and in all material related to the said event without compensation.

**Attachment A to
2021 NSW Secondary Schools Teams Racing Championship
Sailing Instructions**

Boats and Boat Management

A. Boats Supplied By The Organizing Authority

- a. Boats will be supplied for all competitors, who shall not modify them or cause them to be modified in any way except that
 - (a) a compass may be tied or taped to the hull or spars;
 - (b) wind indicators, including yarn or thread, may be tied or taped anywhere on the boat;
 - (c) hulls, centreboards and rudders may be cleaned, but only with water;
 - (d) adhesive tape may be used anywhere above the water line; and
 - (e) all fittings or equipment designed to be adjusted may be adjusted, except as provided in section D below.
- b. All equipment supplied with the boat for sailing purposes shall be in the boat while afloat.
- c. The penalty for not complying with one of the above instructions is disqualification from all races sailed in which the instruction was broken.
- d. Competitors shall report any damage or loss of equipment, however slight, to the organizing authority's representative immediately after securing the boat ashore. The penalty for breaking this instruction, unless the protest committee is satisfied that the competitor made a determined effort to comply, is disqualification from the race most recently sailed.
- e. Class rules requiring competitors to be members of the class association do not apply.

B. General Rules for Boat Handling

- a. While all reasonable steps are taken to equalise boats, variations will not be grounds for redress (amends rule 62).
- b. Competitors shall inspect assigned boats before each race for possible breakdown and missing equipment. Discrepancies shall be reported to the Beach Manager.
- c. Competitors shall report any damage or loss of equipment however slight as soon as possible the Beach Manager.
- d. Competitors must comply with any request from the Beach Managers regarding the berthing or hauling out of boats.
- e. Teams sailing the first races of each day are responsible for rigging and launching of boats prior to racing. Those teams sailing the last race of the day are responsible for berthing and storage, cleaning and unrigging of boats at the conclusion of each day/s sailing.

C. Handover of boats

- a. Handover of boats between races shall be completed without delay.
- b. After finishing competitors shall sail directly to the changeover area, without interfering with any races in progress.
- c. Competitors must leave the boat in the same state of repair and cleanliness as when first boarded and as empty of water as is possible.

D. Prohibited Items & Actions

Except in an emergency or in order to prevent damage or injury, or when directed by a race official or umpire, the following are prohibited:

- Perforating sails
 - Cleaning or washing hulls, or foils with anything other than water
 - Adjusting or altering standing rigging, halyards and main sail batten tension
 - **Jibs will be all set at the same tension and taped off on the mast on all boats. They are to be unfurled when rigging and furled when derigging the boats at the end of the day. DO NOT undo the jibs and adjust the tension.**
 - **If there are any problems with rigging or derigging, please see an Official and request to have it fixed.**
 - Removing purchases on the mainsheet
 - Marking of the hull or equipment other than by removable adhesive tape
 - The use of equipment or fittings for the purpose other than that intended
 - Intentional damage/tampering with boats
- Any additions to or alterations of equipment supplied

E. Permitted Items & Actions

- a. All equipment provided with the boat shall be carried while afloat.
- b. It is permissible to take on board,
 - Sunscreen
 - Drinking Water
 - Bailing bucket & sponge
 - Yarn or thread
 - Easily removable adhesive tape
 - Line [elastic or otherwise of 3mm diameter or less] that may be used for making minor repairs and preventing further damage
 - Tell-tails may be attached to sails with sail tape and shall then not be removed.
 - Wind indicators [yarn, thread, audio-tape or similar material] may be tied or taped to the side stays and shall then not be removed.
- c. All fittings or equipment designated to be adjusted may be adjusted except those items listed in Item C.
- d. Any fitting may be taped with electrical tape or similar to prevent injury, but this shall not prevent the normal action or use of that fitting.

F. Mandatory Items and Actions

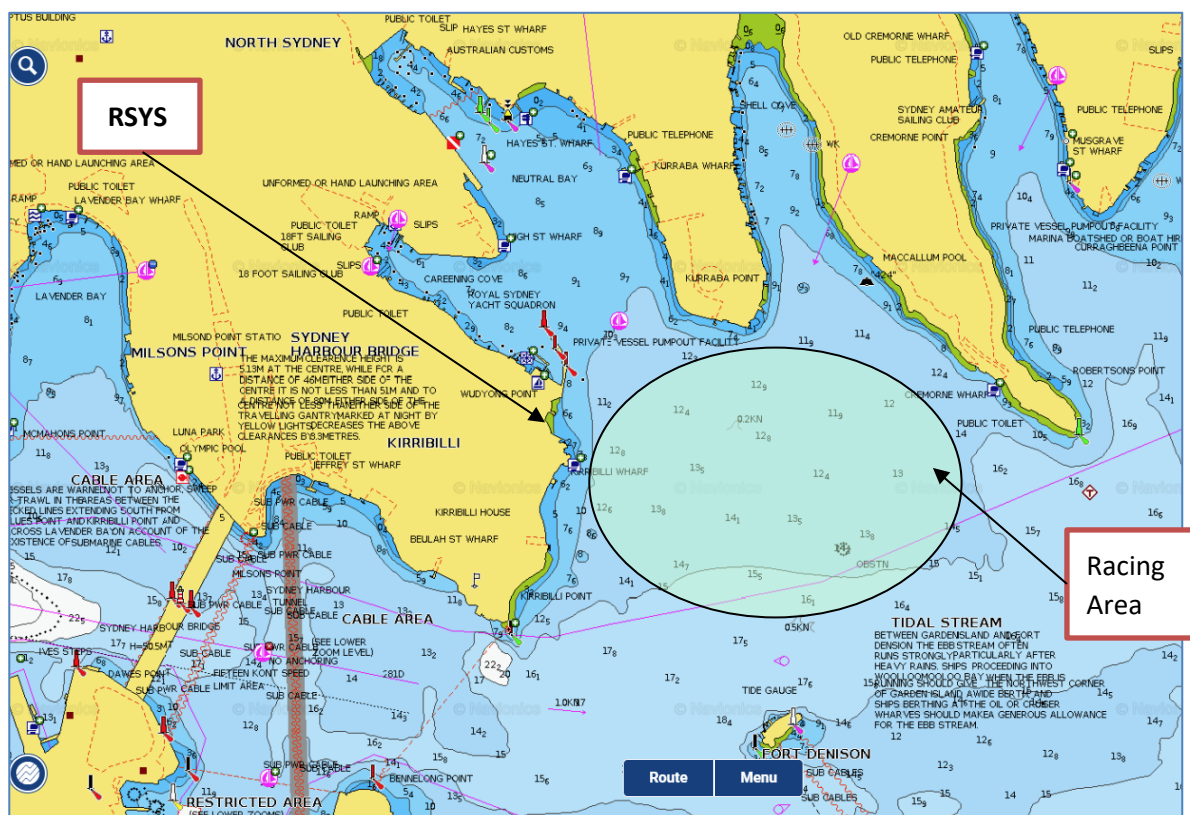
Competitors must supply their own bailing bucket of at least 1 litre capacity.

Attachment B to
2021 NSW Secondary Schools Teams Racing Championship
Sailing Instructions

Royal Sydney Yacht Squadron and Racing Area

Royal Sydney Yacht Squadron
33 Peel Street, Kirribilli, Sydney, NSW

rsys.com.au



Interface with Royal Sydney Yacht Squadron and Club Conditions

1. General

The host club, Royal Sydney Yacht Squadron is a member's club and as such clear parameters and guidelines will be prepared for the regatta to control the manner in which the Regatta Committee, Competitors, School Representatives, Parents and Spectators interact with the club.

These guidelines will be shared with competing schools following registration.

The guidelines will be adhered to by all entrants and their support staff.

Refer general Club conditions attached to be read in conjunction with this note.

2. On Site Amenity for Competitors and Support Staff

The Organising Authority will provide change rooms and amenities for use by the competitors and support staff. The Regatta Committee room will provide storage space for competitor bags whilst on water.

Competitors and their support staff will generally be accommodated on the lawn in front of the clubhouse and overlooking the race area.

Competitors and their support staff will have access to food and beverage facilities provided by the club. Access to such facilities will be in accordance with Club policy.

3. On Water Access for Coaches and Support Staff

Team leaders, coaches and other support personnel are not permitted on the water.

Coaches and support staff will co-ordinate access to Marshalling area and changeover areas and any other vessels in accordance with the parameters and guidelines established by the club.

All school support staff will require to be registered prior to the regatta.

4. Parents and Spectators

Competitors and their support staff will have access to food and beverage facilities provided by the club. Access to such facilities will be in accordance with Club policy.

Parents and Spectators seeking on water access to the club will do so only within the parameters and guidelines established by the club.

**Attachment D to
2021 NSW Secondary Schools Teams Racing Championship
Sailing Instructions**

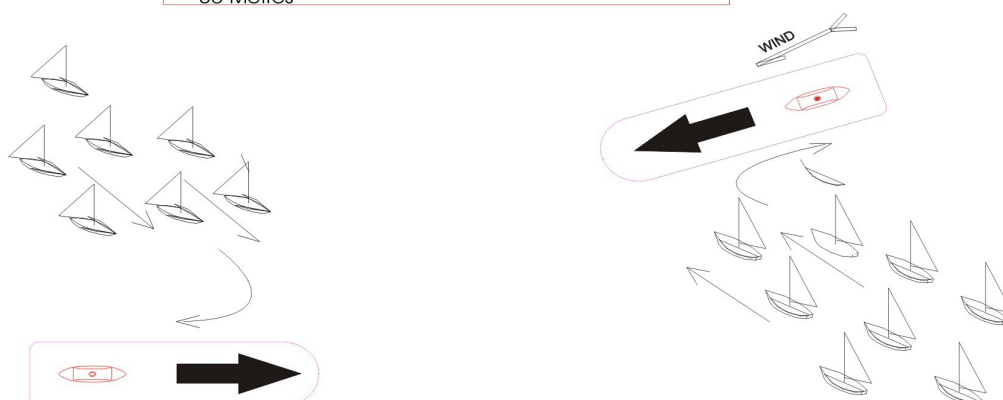
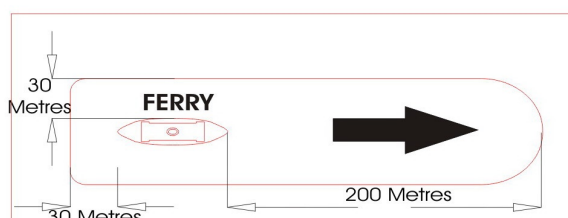
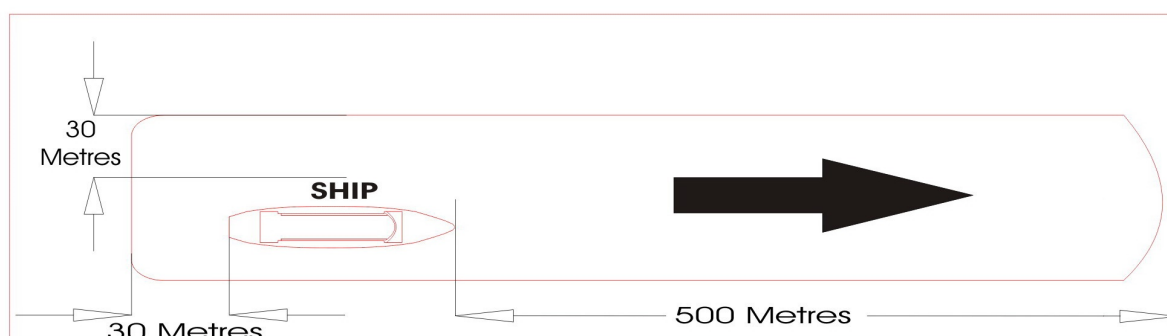
Royal Sydney Yacht Squadron Emergency Procedures

Ship and Ferry Activated Exclusion Zones

Notice to Competitors

All competitors must maintain a minimum distance of 500m from the bow of any ship(1) and 200m from the bow of any ferry(2) and no less than 30m from the sides/stern of any ship or ferry underway. These exclusion zones are designated as an obstruction.

- 1 Oil tankers & Seagoing cruise ships.
- 2 Other seagoing commercial vessel or ferry operating in accordance with an approved timetable.



**SHIP & FERRY ACTIVATED
EXCLUSION ZONE**

8 Team Finals Format